



Lexington January Agility



January 12 – 14, 2018

Virginia Horse Center – Anderson Coliseum

487 Maury River Rd., Lexington, VA 24450

This is your Final Confirmation for the Lexington January Agility trials on Jan. 12-14, 2018 in Lexington, VA. These trials are hosted by the Star City Canine Training Club and the Dog Owners Training Club of Lynchburg, Inc. Please review the confirmation information and notify me by email or mail immediately of any changes or modifications that need to be made.

Please check our website: www.GoneDogginAgility.com for additional trial info and a link for Volunteer sign up.

PLEASE READ RIGHT AWAY

Esp. Class and Jump Ht

Corrections must be made by 1-5-18

- Thursday Setup – **Building will be available at noon for exhibitor setup**
- B-Match – 2pm – 7pm

The center will open at 6:30am all days for exhibitors.

PARKING: Please park directly across from the Anderson Coliseum on Friday. The Horse Center is open for regular business and the employees park in the parking lots next to the offices.

TRIAL SITE

These agility trials will be held in an indoor arena on a sand/clay surface. There is plenty of room for crating and lots of grassy areas for walking dogs. Remember that this is a horse facility. Please be careful and keep your dogs on leash. The club does not want to excuse people from the trial for causing problems around the horses.

- No personal crates or chairs on the ground floor without approval of the Trial Chair. Handicapped crating and seating on floor or designated room only with approval of Trial Chair.
- Crates may be left overnight; however, SCCTC, DOTC and the Virginia Horse Center will not be responsible for any lost or damaged items left at the show site.
- Please be considerate of others and conserve crating space. Please leave aisle ways clear or we will have to move you.
- Please do NOT walk your dogs in any area that has been mulched or landscaped to include gardens, flower beds or shrubs.
- Do not allow your dogs to relieve themselves on trashcans and/or the building.
- Flexi-Leads **MUST** be kept at the 2' LOCKED position when used **IN** and **NEAR** the building.
- High occupancy X-Pens ARE allowed.
- A full service concession stand is available on site.
- **Exhibitors are responsible** for cleaning up after their dog(s). Any exhibitor failing to do so may be excused without benefit of refund if the Event Committee deems the exhibitor to be in violation of this requirement. Cleaning supplies and disposal sites will be available at various locations around the show grounds.
- Please download a copy of the Virginia Horse Center rules/regulations from the GoneDoggin' website.

All Violations will be referred to the Event Committee for a hearing.

CHECK-IN and MEASURING

We will not be using Armband labels at these trials. However, you will need to know your Armband number in order to do an At Trial move-up. Please bring a printed or an electronic copy of your trial confirmation so you will have your armband number with you.

We will have four Volunteer Measuring Officials (VMOs) at our trials. All dogs needing to be measured must be measured by a VMOs prior to running. Measurements will take place from 7am to 7:30am each day. Additional measurements during the trial are subject to VMO availability. Please allow sufficient time before your first run to be measured. Please remember that our VMOs are "Volunteers"!

DO NOT RISK A Q – GET MEASURED BEFORE RUNNING

MOVE-UPS

Move-ups must be received by the Trial Secretary in writing (e-mail preferred) prior to 6pm on Monday, January 8, 2018.

Be sure that I have acknowledged receipt of your move-up. Please preface all correspondence with "Lex-Jan" in the Subject line. **Day to Day move ups must be submitted in person to the trial secretary no later than 15 minutes after the last run is judged for each class (STD & JWW).**

LODGING / RVs - See premium for hotel and RV information.

VOLUNTEERS An estimated timeline and the Worker Sign up link is available on the GoneDoggin' website, www.GoneDogginAgility.com. Contact Judy Smotrel, jsmotrel@prodigy.net, if you have any problems signing up. Workers will receive a Raffle ticket for each class worked and a voucher that can be used towards a future entry or at the Concession stand.

JUDGES

Dave Hirsch #70508 Columbus, OH

Jack Cadalso # 41695 Albany, NY

RUNNING ORDER & SCHEDULE

Judge’s briefings will only be at the beginning of each class – NOT before each jump height.

Friday LOW to HIGH	
Ring 1 8 am Start Briefing 7:40am HIRSCH	Ring 2 8:30 am Start Briefing 8:10am CADALSO
EX/MAS FAST	OPEN FAST NOV FAST Walk OPN – Walk NOV Run OPN – Run NOV
PREM STD	
EX/MAS STD	NOV JWW
	OPEN JWW
	EX/MAS JWW
OPN STD	
NOV STD	PREM JWW

Saturday LOW to HIGH	
Ring 1 9am Start Briefing 8:40am CADALSO	Ring 2 8 am Start Briefing 7:40am HIRSCH
EX/MAS STD	T2B 4-16" WALK / RUN Judge: CADALSO 20-24C" WALK / RUN Judge: HIRSCH
	NOV JWW
OPN STD	OPN JWW
NOV STD	EX/MAS JWW

Sunday HIGH to LOW	
Ring 1 9 am Start Briefing 8:40am HIRSCH	Ring 2 8 am Start Briefing 7:40am CADALSO
EX/MAS STD	T2B 24C-20" WALK / RUN Judge: HIRSCH 16-4" WALK / RUN Judge: CADALSO
	NOV JWW
OPN STD	OPEN JWW
NOV STD	EX/MAS JWW

EX/MAS STD and EX/MAS JWW

walkthrus will be split as follows:

- 4" - 8" - 12"** Walk – Run
- 16"** Walk – Run
- 20"** Walk – Run
- 24"** Walk – Run

NOTE: When EX/MAS groups are 60+ it will be: WALK1 – WALK2 – RUN ALL (no 5 minute break until the first dog).

This will be clearly marked on the Gateboards.

Judges may further split walks at their discretion.

Please be sure to check the Ring START times daily as they are different to accommodate the classes

** Open and Novice JWW classes take precedence over EX/MAS STD class.

Walkthru groups will be clearly marked on the Gate Boards.
All other classes will have one walkthru.

If you think you will miss your scheduled walkthru due to a conflict, walk with an EARLIER jump height!

For those with conflicts, you are asked to please walk the courses with an EARLIER height group if the conflict would mean you can't walk with your height class. You can also run at the end of the earlier height group or at the beginning of your height group instead of at the end. All conflicts must be approved by the judge.

We realize that handlers with multiple dogs will have some conflicts.

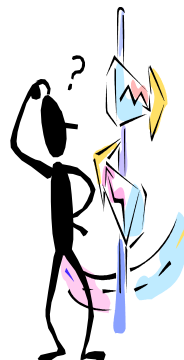
Please be sure to mark and/or notify the Gate stewards in BOTH RINGS that you have a possible conflict.

DIRECTIONS TO THE EVENT SITE

Virginia Horse Center – Anderson Coliseum
487 Maury River Rd., Lexington, VA 24450
www.vahorsecenter.org

From the North:

- Take I-81 South to Exit 191
- Proceed on I-64 West towards Lexington for ½ mile to Exit 55.
- Turn right on Rt. 11 North. Immediately turn left on Rt. 39 West
- The Virginia Horse Center is one mile ahead on the left.



From the South:

- Take I-81 North to Exit 191
- Follow directions above

From the East:

- Take I-64 West toward Lexington
- Follow directions above

From the West:

- Take I-64 East toward Lexington
- Follow directions above

VETERINARIAN EMERGENCY SERVICES

Shenandoah Valley Regional Veterinary Emergency Services

465 Lee Highway, Verona, VA 24482 (Do not use this address for a GPS)
 (540) 248-1051
 Hours: Friday 6 PM to 8 AM, SAT noon to 8 AM Monday.

VETERINARIAN ON CALL

Blue Ridge Animal Hospital

133 Maury River Rd., Lexington, VA 24450
 (540) 463-7799
 FRI: 8am – 6pm SAT: 8am – 1pm

EMERGENCY SERVICES

Fire/Ambulance/Police
 Lexington City
 911

Please feel free to contact us should you need anything further. We look forward to seeing you and wish everyone safe travel and clean runs!

Laurene & Jenn Galgano, Lexington Trial Secretary

PO Box 3070, Virginia Beach, VA 23454
 E-Mail: GoneDoggin@cox.net (757) 343-8538 -Cell

GoneDoggin' Website
 (For updated Trial Information, Estimated Timeline,
 Worker Schedule Link)
www.GoneDogginAgility.com

Lexington January Agility Trial Statistics
 January 12 - 14, 2018

This is a preliminary judging schedule which is contingent upon the move-up of entries that may not have been received. Final numbers may differ as the chart below is created before the final closing of move ups

(Data does not reflect any move ups received after January 1st)

Friday, January 12 th								
STANDARD	4"	8"	12"	16"	20"	24"	24C"	Total
NOVICE	0	4	4	4	9	2	0	23
OPEN	0	2	6	8	11	3	0	30
EX/MAS	0	17	40	41	52	26	4	180
PREMIER	0	3	9	6	8	3	2	31
JUMPERS	4"	8"	12"	16"	20"	24"	24C"	Total
NOVICE	0	6	5	5	11	4	0	31
OPEN	0	2	5	10	11	3	0	31
EX/MAS	0	16	41	41	49	25	4	176
PREMIER	0	3	8	8	7	3	2	31
FAST	4"	8"	12"	16"	20"	24"	24C"	Total
NOVICE	0	3	3	7	9	5	0	27
OPEN	0	0	5	6	11	4	0	26
EX/MAS	0	3	11	8	16	7	2	47
								Total Runs Friday: 633

Saturday, January 13 th								
STANDARD	4"	8"	12"	16"	20"	24"	24C"	Total
NOVICE	1	4	5	8	15	2	0	35
OPEN	0	2	6	9	17	3	0	37
EX/MAS	0	16	51	47	64	28	4	210
JUMPERS	4"	8"	12"	16"	20"	24"	24C"	Total
NOVICE	1	3	5	8	17	3	0	37
OPEN	0	3	6	10	16	3	0	38
EX/MAS	0	16	51	48	62	27	4	208
T2B	4"	8"	12"	16"	20"	24"	24C"	Total
REG & PREF	0	5	25	14	36	12	3	95
								Total Runs Saturday: 660

Sunday, January 14 th								
STANDARD	4"	8"	12"	16"	20"	24"	24C"	Total
NOVICE	1	7	5	8	12	2	0	35
OPEN	0	3	6	6	16	2	0	33
EX/MAS	1	13	44	45	56	27	3	189
JUMPERS	4"	8"	12"	16"	20"	24"	24C"	Total
NOVICE	1	6	3	9	16	3	0	38
OPEN	0	5	7	6	14	2	0	34
EX/MAS	1	12	45	45	53	26	3	185
T2B	4"	8"	12"	16"	20"	24"	24C"	Total
REG & PREF	1	3	21	11	28	10	3	77
								Total Runs Saturday: 591